

THE A3 PRINTER TO END ALL OFFICE NIGHTMARES

The world's first
A3 inkjet MFD



The world's first colour inkjet multi-functional device with A3 capabilities

Professional Series
MULTI-FUNCTION CENTRE

brother®
at your side

EXPAND YOUR POSSIBILITIES

with the world's first A3 Inkjet Multi-Function Centre®



4" X 6"

A4



A3

The big name in office innovation introduces a new Multi-Function Centre® range that can handle the big jobs with ease

Offering world-first A3 capabilities, outstanding print quality and impressive cost efficiency, the new Professional Series is the latest and greatest generation in Brother's award winning Multi-Function Centre® family.

These outstanding new multi-function colour inkjet printers have been designed for both business and home office users who want quality, value and versatility along with the option of creating a big impact with bigger A3 capabilities.

From high speed, high resolution colour printing, copying, scanning and faxing to an array of resource-saving productivity tools and networking capabilities, the Professional Series offers a host of easy-to-use features that maximise quality and efficiency.

With 4 new models in the Professional Series, you're sure to find the compact all-in-one Multi-Function Centre® that's just the one for all your needs.



The Professional Series Big on features that make for outstanding performance

Fast And Professional Printouts Up To A3



With print speeds of up to 35ppm (black) and 28ppm (colour) plus super fine 6000 dpi resolution, the Professional Series offers fast production of professional quality photos, posters, brochures and marketing materials every time.

The world's first Multi-Function Centre® range to offer A3 capabilities. The Professional Series takes excellence to new dimensions and will soon offer the added advantage of A3 double-sided printing with the release of the MFC-6890CDW in June 2009.

The Added Brilliance Of Innobella®



When used with Brother's specially formulated Innobella® Ink and Photo Paper, your Multi-Function Centre® will operate at its absolute optimal level, ejecting ink droplets just 1.5 picolitres in size. This gives you brilliant high resolution and smooth gradations on printouts as large as A3 borderless.

It also gives you greater cost efficiency, as Brother's high yield Innobella® Ink cartridges offer twice the page yield of standard cartridges in a 4-cartridge system where you only replace the colour which has run out.

Versatile Multi-Functionality



Along with the convenience of all-in-one print, fax, copy and scan capabilities, the Professional Series extends these functions with extra productivity tools for enhanced multi-function performance.



A unique PC Fax receiving feature allows receipt of faxes in soft copy even when the PC is turned off, while the Super G3 Fax allows transmissions in approximately 3 seconds.

Additionally, a variety of versatile scanning applications allows you to scan directly to email, to file, to card or USB flash memory drive, to Optical Character Recognition for pre-printed document editing and (with the exception of the MFC-5490CN) to an FTP server.

Ease Of Use



With the Professional Series' simple control panels you can perform a multitude of functions quickly and easily with the touch of a button.

With select models also featuring a wide, full colour up to 4.2" LCD screen you also have the option of previewing faxes and documents before printing, to minimise paper and ink wastage.

Multiple Connectivity

With a variety of connectivity options, this new Multi-Function Centre® range makes it easy to print directly from, or scan to, various multimedia cards and USB flash memory drives.



An array of commonly used card slots and a cable port also make connectivity simple and allow for printing directly from a camera, without going via a computer.

Colour Optimisation



Using an exclusive process called True2life®, the Professional Series accurately optimises your colour prints, matching the original colours captured on your camera for the truest colour prints possible.

Wired Or Wireless Networking Options



You can share powerful features like print, scan and PC Fax easily with your Professional Series Multi-Function Centre®. Media cards or USB flash memory drives can be accessed over your wired or wireless network, depending on the model you choose, with user-friendly installation tools making set-up easy.

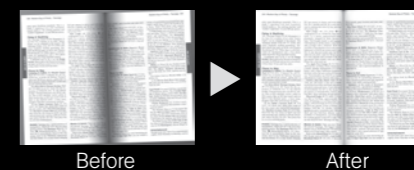
Reduced Paper Work



To increase efficiency and reduce the need for user interaction, the Professional Series incorporates features such as extra large or dual paper storage areas that allow for less paper loading and replacement.

The 50 page Automatic Document Feeder also allows for unattended copying, scanning and faxing of multi-page documents at the touch of a button.

Perfect Copies Every Time



Incorporating a special copy enhancement feature, the Professional Series allows you to improve image quality by eliminating shadows, adding elements such as watermarks and even straightening skewed documents.

Security

To increase security and ensure appropriate equipment usage, a Secure Function Lock feature allows an administrator to restrict user access to various functions with a 4 digit PIN code.

Warranty

Every Brother Professional Series Multi-Function Centre® is covered by our 2 Year Back To Base Warranty. Simply take your machine to your nearest Brother Authorised Centre for prompt attention.

MFC-5890CN

Network ready Colour Inkjet Multi-Function Centre® that Prints in A3 and Scans, Copies and Faxes in A4



The Professional Series MFC-5890CN all-in-one is perfect for your presentations, signs, spreadsheets, reports, photos and more with versatile printing up to A3 plus A4 faxing, copying and scanning. This all-in-one printer also boasts the user-friendly 3.3" LCD screen, time saving direct USB printing and scanning plus a large 50 sheet Automatic Document Feeder.

Features

- A3 Colour Inkjet Printer
- A4 Colour Fax, Flatbed Digital Copier and Flatbed Colour Scanner
- 3.3" LCD screen with built-in Photo Enhance Facility to view and manipulate photos without PC connection
- PC-Fax with 50 sheet Automatic Document Feeder
- Up to 150 sheets paper capacity
- High speed Super G3 Faxing
- USB Host with direct scan to PDF feature
- 64MB Standard Memory



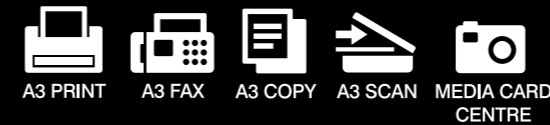
Wide 3.3" LCD for ease of use



Automatic Document Feeder for quick handling of multi-page documents

MFC-6490CW

Wireless Colour Inkjet Multi-Function Centre® that Prints, Scans, Copies and Faxes in A3



The world's first A3 inkjet MFD

The world's first compact A3 Multi-Function Centre®, the Professional Series MFC-6490CW colour inkjet all-in-one is ideal for creating impressive everyday business documents such as reports, presentations, spreadsheets, proposals and more. Featuring wide screen 3.3" colour LCD display and with the flexibility of up to A3 print, copy, fax and scan, the MFC-6490CW also offers total connectivity including wireless connection with easy and secure set-up.

Features

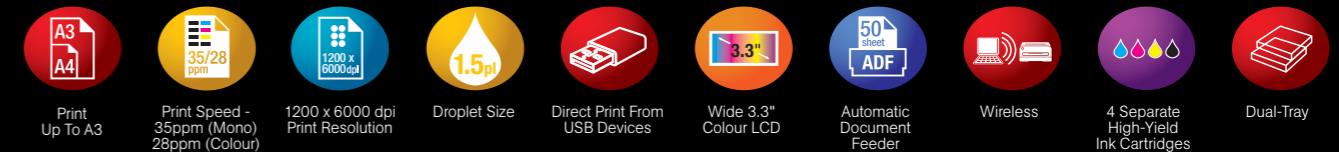
- Wireless A3 Colour Inkjet Printer, Colour Fax, Flatbed Digital Copier and Flatbed Colour Scanner
- 3.3" LCD screen with built-in Photo Enhance Facility to view and manipulate photos without PC connection
- PC-Fax with 50 sheet Automatic Document Feeder
- Up to 150 sheets standard paper capacity tray plus up to 250 sheet capacity in the lower tray
- High speed Super G3 Faxing
- High speed USB connection for direct scan and print capabilities
- 64MB Standard Memory



Wide 3.3" LCD for ease of use



Fax, copy or scan your A3 documents



MFC-6890CDW

Available June 2009

Wireless Colour Inkjet Multi-Function Centre® that Prints, Scans, Copies and Faxes in A3 and has Duplex Printing



Brother's most innovative Multi-Function Centre®, the MFC-6890CDW offers all the outstanding features of the MFC-6490CW, including built-in wired and wireless capabilities and secure easy set-up software, with the added benefits of duplex printing for automatic hassle-free printing on both sides of the paper.

Features

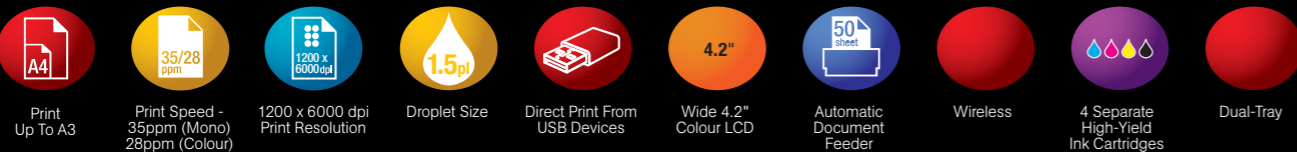
- Wireless A3 Colour Inkjet Printer, Colour Fax, Flatbed Digital Copier and Flatbed Colour Scanner
- Automatic and convenient dual-sided duplex printing
- 4.2" Touch Panel LCD with built-in Photo Enhance Facility to view and manipulate photos without PC connection
- PC-Fax with 50 sheet Automatic Document Feeder
- Up to 150 sheets standard paper capacity tray plus up to 250 sheet capacity in the lower tray
- High speed Super G3 Faxing
- High speed USB connection for direct scan and print capabilities
- 64MB Standard Memory



4.2" Touch Panel LCD

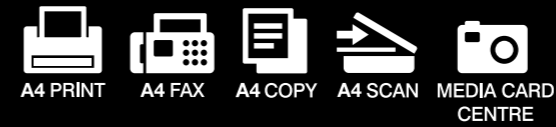


Duplex printing



MFC-5490CN

For those who need a Professional Network Ready Colour Inkjet Multi-Function Centre® without the A3 features



The perfect office worker, the Professional Series MFC-5490CN offers fast and professional quality A4 printing, faxing, copying and scanning for everyday business applications including presentations, spreadsheets, reports and more. This versatile all-in-one printer offers time-saving direct USB printing and scanning features, along with unattended fax, copy and scan plus network capabilities which allow sharing among several users.

Features

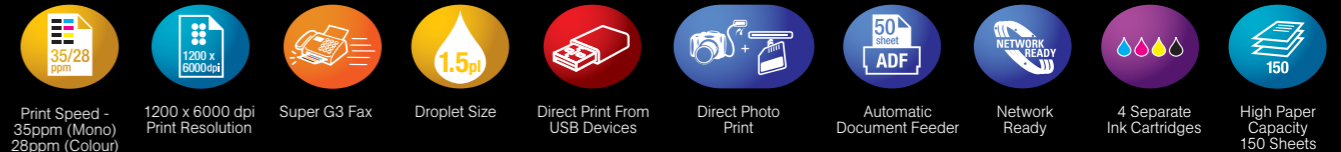
- A4 Colour Inkjet Printer, Colour Fax, Flatbed Digital Copier and Flatbed Colour Scanner
- PC-Fax with 50 sheet Automatic Document Feeder
- Large 150 sheet paper capacity
- High speed Super G3 Faxing
- 100 speed dials
- USB Host with direct scan to PDF feature
- 40MB Standard Memory



Direct USB printing



Colour printing up to A4



Technical Specifications

MFC-5890CN	
General	
Printing Technology	Inkjet
Display	Wide 3.3" Colour LCD Display
Memory Capacity	64MB
Interfaces	Hi-speed USB 2.0 / USB Direct1 / PictBridge™ / Media Cards
Network	Built-in Fast Ethernet 10/100 Base-TX
Network Functionality	Print, Scan, PC Fax and PhotoCapture Centre™
Protocols	Print, Scan, PC Fax and PhotoCapture Centre™
Secure Function Lock	TCP / IP (IPv4 & IPv6) Restricts functions on the machine, such as fax or copying, to selected users
Colour Printing	
Print Speed	Up to 35 ppm (Monochrome) & 28 ppm (Colour)
Print Resolution	Up to 1200 x 6000 dpi
Borderless Printing	Available for A3, A4, B4, LGR, LTR, A6, Photo 4x6", Index Card, Photo-L, Photo-2L, Post Card 1
Colour Enhancement	Brother image enhancement allows you to customise colour output
Minimum Droplet Size	1.5pl ² (picolitres)
Colour Faxing	
Modem Speed	33.6Kbps Super G3
Best Transmit Speed	Approximately 3 seconds
Data Compression	MH, MR, MMR (Monochrome), JPEG (Colour)
Fax / Tel Switch	Automatic recognition of fax and telephone reception
One-Touch Dials	6 locations
Speed Dials	80 locations for pre-stored numbers
Group Dials	Up to 6 groups
Automatic Redial	Automatic redial if the recipient fax is busy
Memory Transmission	Up to 400 pages ³
Out-of-Paper Reception	Up to 400 pages ³
Broadcasting Locations	Send the same fax message to up to 216 locations
Auto Reduction	Automatically reduces a received fax to fit onto a single sheet of A4
ECM (Error Correction Mode)	Yes (Monochrome only)
Fax Forwarding	Yes (Monochrome only)
Fax Retrieval	Scan a fax for transmission while receiving a fax (Monochrome only)
Dual Access	Fax documents anywhere in the world over the Internet and without the use of a telephone line (Download Only)
Internet Fax (I-Fax)	Yes
Colour Copying	
Copy Speed	Up to 23 cpm (Monochrome) & 20 cpm (Colour)
Copy Resolution	Up to 1200 x 1200 dpi (Monochrome) Up to 1200 x 1200 dpi (Colour)
Multi-copy	Produces up to 99 copies of each original
Enlargement / Reduction Ratio	25% - 400% in 1% increments
N-in-1	Reduce 2 or 4 pages onto a single sheet
Poster Printing	Enlarge an image to print onto 3 x 3 & 2 x 2 pages
Copy Enhancement	Book copy (Shadow Correction & Skew Adjustment for book) & watermark copy
Colour Scanning	
Colour and Monochrome	Yes
Scanning Resolution	Optical - Up to 1200 x 2400 dpi / Interpolated - Up to 19200 x 19200 dpi
Scan Speed	From 4 seconds (Monochrome) & from 5 seconds (Colour) (A4 size, 100 x 100 dpi)
Greyscale	256 shades of grey
Colour Depth	48 / 24-bit colour processing
"Scan" key	Allows the user to scan to E-mail, OCR, image, file, card or a USB flash memory drive, FTP, E-mail Server. Supporting: JPEG, PDF, TIFF
PC Faxing	
Sending	Yes, available for Windows® and Macintosh®
Receiving	Yes, available for Windows® only
Paper Handling	
Paper Input	150 sheets standard paper tray 50 sheets Automatic Document Feeder (ADF)
Paper Output	50 sheets
Paper Handling Sizes	A3, A4, LGR, LTR, LGL, EXE, JISB4, JISB5, A5, A6, Photo 4x6" (102x152mm), Index Card (127x203mm), Photo-L (89x127mm), Photo-2L (127x178mm), Post Card 1 (100x148mm), Post Card 2 (148x200mm), C5 Envelope, Com-10, DL Envelope, Monarch, JE4 Envelope
Media Type	Plain, inkjet, glossy, transparency
Direct Photo Printing	
PictBridge™	Print directly from a PictBridge™ enabled digital camera
USB Direct Interface	Print directly from a USB flash memory drive
PhotoCapture Centre™	Compact Flash: 4MB - 8GB (Type1 only, Type2 & Microdrive are not compatible)
(Acceptable Media Cards)	Memory Stick™: 16MB - 128MB (Memory Stick Duo™ with Adapter) Memory Stick Pro™: 256MB - 8GB (MagicGate: Yes if not using MG function) Secure Digital: 16MB - 2GB (MiniSD with Adapter) Secure Digital High Capacity (SDHC): 4 - 8GB xD Picture Card: 16MB - 512MB xD Picture Card Type M / Type M+ / Type H: 256MB - 2GB
Media Card Drive	Save and retrieve files using any of the above listed media cards
Network Media Card Drive	Save and retrieve files using any of the above listed media cards through the network
Image Format	Photo Print: JPEG Scan to Card: JPEG, PDF (Colour), TIFF, PDF (Monochrome)
Others	Monochrome / Sepia, Trimming, Slide Show, Date Search & Photo Enhance
Software	
Driver Software Included	Brother MFL-Pro Suite
Windows®	Brother ControlCentre3, ScanSoft® Paperport™ 11 SE with OCR
Macintosh®	Brother ControlCentre2, NewSoft Presto!™ PageManager®
Realisation FaceFilter Studio	A simple and easy to use photo editor that enables you to fine-tune your photos to print perfect, professional-looking photos with or without borders
Software	Windows Vista™ / Windows® XP Professional (32 & 64 bit editions) / XP Home Edition / Windows® 2000 Professional (SP4) / Mac OS® X 10.2.4 or greater
Supported Operating System	
Consumables	
Innobella™ High-Yield Ink Cartridges* (bundled)	LC-67HYBK LC-67HY C / M / Y
Innobella™ Standard-Yield Ink Cartridges* Brother Paper	LC-67BK LC-67 C / M / Y BP71GA3 BP71GA4 BP71GP20 BP60MA3 BP60PA3 BP60MA BP60PA
	Black: up to 900 pages Cyan / Magenta / Yellow: Up to 750 pages each Black: up to 450 pages Cyan / Magenta / Yellow: Up to 325 pages each Innobella™ A3 Glossy Photo Paper (20 sheets) Innobella™ A4 Glossy Photo Paper (20 sheets) Innobella™ 4x6 Glossy Photo Paper (20 sheets) A3 Matte Inkjet Paper (25 sheets) A3 Plain Inkjet Paper (250 sheets) A4 Matte Inkjet Paper (25 sheets) A4 Plain Inkjet Paper (250 sheets)
Dimensions & Weight	
With Carton	597(W) x 541(D) x 380(H)mm / 15.7kg
Without Carton	485(W) x 408(D) x 242(H)mm / 10.9kg

MFC-6490CW	
General	
Printing Technology	Inkjet
Display	Wide 3.3" Colour LCD Display
Memory Capacity	64MB
Interfaces	Hi-speed USB 2.0 / USB Direct1 / PictBridge™ / Media Cards
Network	Built-in Fast Ethernet 10/100 Base-TX
Network Functionality	Print, Scan, PC Fax and PhotoCapture Centre™
Protocols	Print, Scan, PC Fax and PhotoCapture Centre™
Secure Function Lock	TCP / IP (IPv4 & IPv6) Restricts functions on the machine, such as fax or copying, to selected users
Wireless Setup	Secure Easy Setup™ (SES), Wi-Fi™ Protected Setup™ (WPS), Airstation OneTouch Secure System™ (AOSS)
Colour Printing	
Print Speed	Up to 35 ppm (Monochrome) & 28 ppm (Colour)
Print Resolution	Up to 1200 x 6000 dpi
Borderless Printing	Available for A3, A4, B4, LGR, LTR, A6, Photo 4x6", Index Card, Photo-L, Photo-2L, Post Card 1
Colour Enhancement	Brother image enhancement allows you to customise colour output
Minimum Droplet Size	1.5pl ² (picolitres)
Colour Faxing	
Modem Speed	33.6Kbps Super G3
Best Transmit Speed	Approximately 3 seconds
Data Compression	MH, MR, MMR (Monochrome), JPEG (Colour)
Fax / Tel Switch	Automatic recognition of fax and telephone reception
One-Touch Dials	6 locations
Speed Dials	100 locations for pre-stored numbers
Group Dials	Up to 6 groups
Automatic Redial	Automatic redial if the recipient fax is busy
Memory Transmission	Up to 400 pages ³
Out-of-Paper Reception	Up to 400 pages ³
Broadcasting Locations	Send the same fax message to up to 256 locations
Auto Reduction	Automatically reduces a received fax to fit onto a single sheet of A4
ECM (Error Correction Mode)	Yes
Fax Forwarding	Yes (Monochrome only)
Fax Retrieval	Yes (Monochrome only)
Dual Access	Scan a fax for transmission while receiving a fax (Monochrome only)
Internet Fax (I-Fax)	Fax documents anywhere in the world over the Internet and without the use of a telephone line
Colour Copying	
Copy Speed	Up to 23 cpm (Monochrome) & 20 cpm (Colour)
Copy Resolution	Up to 1200 x 1200 dpi (Monochrome) Up to 1200 x 1200 dpi (Colour)
Document Glass Size	11.7" x 17" (297 x 431.8mm)
Multi-copy	Produces up to 99 copies of each original
Enlargement / Reduction Ratio	25% - 400% in 1% increments
N-in-1	Reduce 2 or 4 pages onto a single sheet
Poster Printing	Enlarge an image to print onto 3 x 3 & 2 x 2 pages
Copy Enhancement	Book copy (Shadow Correction & Skew Adjustment for book) & watermark copy
Colour Scanning	
Colour and Monochrome	Yes
Scanning Resolution	Optical - Up to 1200 x 2400 dpi / Interpolated - Up to 19,200 x 19,200 dpi
Scan Speed	From 4 seconds (Monochrome) & from 5 seconds (Colour) (A4 size, 100 x 100 dpi)
Greyscale	256 shades of grey
Colour Depth	48 / 24-bit colour processing
"Scan" key	Allows the user to scan to E-mail, OCR, image, file, card or a USB flash memory drive, FTP, E-mail Server. Supporting: JPEG, PDF, TIFF
PC Faxing	
Sending	Yes, available for Windows® and Macintosh®
Receiving	Yes, available for Windows® only
Paper Handling	
Paper Input	150 sheets standard paper tray 250 sheets lower tray 50 sheets Automatic Document Feeder (ADF)
Paper Output	50 sheets
Paper Handling Sizes	A3, A4, LGR, LTR, LGL, EXE, JISB4, JISB5, A5, A6, Photo 4x6" (102x152mm), Index Card (127x203mm), Photo-L (89x127mm), Photo-2L (127x178mm), Post Card 1 (100x148mm), Post Card 2 (148x200mm), C5 Envelope, Com-10, DL Envelope, Monarch, JE4 Envelope
Media Type	Plain, inkjet, glossy, transparency
Direct Photo Printing	
PictBridge™	Print directly from a PictBridge™ enabled digital camera
USB Direct Interface	Print directly from a USB flash memory drive
PhotoCapture Centre™	Compact Flash: 4MB - 8GB (Type1 only, Type2 & Microdrive are not compatible)
(Acceptable Media Cards)	Memory Stick™: 16MB - 128MB (Memory Stick Duo™ with Adapter) Memory Stick Pro™: 256MB - 8GB (MagicGate: Yes if not using MG function) Secure Digital: 16MB - 2GB (MiniSD with Adapter) Secure Digital High Capacity (SDHC): 4 - 8GB xD Picture Card: 16MB - 512MB xD Picture Card Type M / Type M+ / Type H: 256MB - 2GB
Media Card Drive	Save and retrieve files using any of the above listed media cards
Network Media Card Drive	Save and retrieve files using any of the above listed media cards through the network
Image Format	Photo Print: JPEG Scan to Card: JPEG, PDF (Colour), TIFF, PDF (Monochrome)
Others	Monochrome / Sepia, Trimming, Slide Show, Date Search & Photo Enhance
Software	
Driver Software Included	Brother MFL-Pro Suite
Windows®	Brother ControlCentre3, ScanSoft® Paperport™ 11 SE with OCR
Macintosh®	Brother ControlCentre2, NewSoft Presto!™ PageManager®
Realisation FaceFilter Studio	A simple and easy to use photo editor that enables you to fine-tune your photos to print perfect, professional-looking photos with or without borders
Software	Windows Vista™ / Windows® XP Professional (32 & 64 bit editions) / XP Home Edition / Windows® 2000 Professional (SP4) / Mac OS® X 10.2.4 or greater
Supported Operating System	
Consumables	
Innobella™ High-Yield Ink Cartridges* (bundled)	LC-67HYBK LC-67HY C / M / Y
Innobella™ Standard-Yield Ink Cartridges* Brother Paper	LC-67BK LC-67 C / M / Y BP71GA3 BP71GA4 BP71GP20 BP60MA3 BP60PA3 BP60MA BP60PA
	Black: up to 900 pages Cyan / Magenta / Yellow: Up to 750 pages each Black: up to 450 pages Cyan / Magenta / Yellow: Up to 325 pages each Innobella™ A3 Glossy Photo Paper (20 sheets) Innobella™ A4 Glossy Photo Paper (20 sheets) Innobella™ 4x6 Glossy Photo Paper (20 sheets) A3 Matte Inkjet Paper (25 sheets) A3 Plain Inkjet Paper (250 sheets) A4 Matte Inkjet Paper (25 sheets) A4 Plain Inkjet Paper (250 sheets)
Dimensions & Weight	
With Carton	656(W) x 597(D) x 460(H)mm / 22.1kg
Without Carton	540(W) x 488(D) x 323(H)mm / 15.6kg

We've packed more into our Professional Series, so you get more out of it

MFC-6890CDW	
General	
Printing Technology	Inkjet
Display	Wide 4.2" Colour LCD Display
Memory Capacity	64MB
Interfaces	Hi-speed USB 2.0 / USB Direct1 / PictBridge™ / Media Cards
Network	Built-in Fast Ethernet 10/100 Base-TX
Network Functionality	Print, Scan, PC Fax and PhotoCapture Centre™
Protocols	Print, Scan, PC Fax and PhotoCapture Centre™
Secure Function Lock	TCP / IP (IPv4 & IPv6) Restricts functions on the machine, such as fax or copying, to selected users
Wireless Setup	Secure Easy Setup™ (SES), Wi-Fi™ Protected Setup™ (WPS), Airstation OneTouch Secure System™ (AOSS)
Duplex Printing	A4 dual-sided printing
Colour Printing	
Print Speed	Up to 35 ppm (Monochrome) & 28 ppm (Colour)
Print Resolution	Up to 1200 x 6000 dpi
Borderless Printing	Available for A3, A4, B4, LGR, LTR, A6, Photo 4x6", Index Card, Photo-L, Photo-2L, Post Card 1
Colour Enhancement	Brother image enhancement allows you to customise colour output
Minimum Droplet Size	1.5pl ² (picolitres)
Colour Faxing	
Modem Speed	33.6Kbps Super G3
Best Transmit Speed	Approximately 3 seconds
Data Compression	MH, MR, MMR (Monochrome), JPEG (Colour)
Fax / Tel Switch	Automatic recognition of fax and telephone reception
One-Touch Dials	6 locations
Speed Dials	100 locations for pre-stored numbers
Group Dials	Up to 6 groups
Automatic Redial	Automatic redial if the recipient fax is busy
Memory Transmission	Up to 400 pages ³
Out-of-Paper Reception	Up to 400 pages ³
Broadcasting Locations	Send the same fax message to up to 256 locations
Auto Reduction	Automatically reduces a received fax to fit onto a single sheet of A4
ECM (Error Correction Mode)	Yes
Fax Forwarding	Yes (Monochrome only)
Fax Retrieval	Yes (Monochrome only)
Dual Access	Scan a fax for transmission while receiving a fax (Monochrome only)
Internet Fax (I-Fax)	Fax documents anywhere in the world over the Internet and without the use of a telephone line
Colour Copying	
Copy Speed	Up to 23 cpm (Monochrome) & 20 cpm (Colour)
Copy Resolution	Up to 1200 x 1200 dpi (Monochrome) Up to 1200 x 1200 dpi (Colour)
Document Glass Size	11.7" x 17" (297 x 431.8mm)
Multi-copy	Produces up to 99 copies of each original
Enlargement / Reduction Ratio	25% - 400% in 1% increments
N-in-1	Reduce 2 or 4 pages onto a single sheet
Poster Printing	Enlarge an image to print onto 3 x 3 & 2 x 2 pages
Copy Enhancement	Book copy (Shadow Correction & Skew Adjustment for book) & watermark copy
Colour Scanning	
Colour and Monochrome	Yes
Scanning Resolution	Optical - Up to 1200 x 2400 dpi / Interpolated - Up to 19,200 x 19,200 dpi
Scan Speed	From 4 seconds (Monochrome) & from 5 seconds (Colour) (A4 size, 100 x 100 dpi)
Greyscale	256 shades of grey
Colour Depth	48 / 24-bit colour processing
"Scan" key	Allows the user to scan to E-mail, OCR, image, file, card or a USB flash memory drive, FTP, E-mail Server. Supporting: JPEG, PDF, TIFF
PC Faxing	
Sending	Yes, available for Windows® and Macintosh®
Receiving	Yes, available for Windows® only
Paper Handling	
Paper Input	150 sheets standard paper tray 250 sheets lower tray 50 sheets Automatic Document Feeder (ADF)
Paper Output	50 sheets
Paper Handling Sizes	A3, A4, LGR, LTR, LGL, EXE, JISB4, JISB5, A5, A6, Photo 4x6" (102x152mm), Index Card (127x203mm), Photo-L (89x127mm), Photo-2L (127x178mm), Post Card 1 (100x148mm), Post Card 2 (148x200mm), C5 Envelope, Com-10, DL Envelope, Monarch, JE4 Envelope
Media Type	Plain, inkjet, glossy, transparency
Direct Photo Printing	
PictBridge™	Print directly from a PictBridge™ enabled digital camera
USB Direct Interface	Print directly from a USB flash memory drive
PhotoCapture Centre™	Compact Flash: 4MB - 8GB (Type1 only, Type2 & Microdrive are not compatible)
(Acceptable Media Cards)	Memory Stick™: 16MB - 128MB (Memory Stick Duo™ with Adapter) Memory Stick Pro™: 256MB - 8GB (MagicGate: Yes if not using MG function) Secure Digital: 16MB - 2GB (MiniSD with Adapter) Secure Digital High Capacity (SDHC): 4 - 8GB xD Picture Card: 16MB - 512MB xD Picture Card Type M / Type M+ / Type H: 256MB - 2GB
Media Card Drive	Save and retrieve files using any of the above listed media cards
Network Media Card Drive	Save and retrieve files using any of the above listed media cards through the network
Image Format	Photo Print: JPEG Scan to Card: JPEG, PDF (Colour), TIFF, PDF (Monochrome)
Others	Monochrome / Sepia, Trimming, Slide Show, Date Search & Photo Enhance
Software	
Driver Software Included	Brother MFL-Pro Suite
Windows®	Brother ControlCentre3, ScanSoft® Paperport™ 11 SE with OCR
Macintosh®	Brother ControlCentre2, NewSoft Presto!™ PageManager®
Realisation FaceFilter Studio	A simple and easy to use photo editor that enables you to fine-tune your photos to print perfect, professional-looking photos with or without borders
Software	Windows Vista™ / Windows® XP Professional (32 & 64 bit editions) / XP Home Edition / Windows® 2000 Professional (SP4) / Mac OS® X 10.2.4 or greater
Supported Operating System	
Consumables	
Innobella™ High-Yield Ink Cartridges* (bundled)	LC-67HYBK LC-67HY C / M / Y
Innobella™ Standard-Yield Ink Cartridges* Brother Paper	LC-67BK LC-67 C / M / Y BP71GA3 BP71GA4 BP71GP20 BP60MA3 BP60PA3 BP60MA BP60PA
	Black: up to 900 pages Cyan / Magenta / Yellow: Up to 750 pages each Black: up to 450 pages Cyan / Magenta / Yellow: Up to 325 pages each Innobella™ A3 Glossy Photo Paper (20 sheets) Innobella™ A4 Glossy Photo Paper (20 sheets) Innobella™ 4x6 Glossy Photo Paper (20 sheets) A3 Matte Inkjet Paper (25 sheets) A3 Plain Inkjet Paper (250 sheets) A4 Matte Inkjet Paper (25 sheets) A4 Plain Inkjet Paper (250 sheets)
Dimensions & Weight	
With Carton	656(W) x 597(D) x 460(H)mm / 22.1kg
Without Carton	540(W) x 488(D) x 323(H)mm / 15.6kg

MFC-5490CN	
General	
Printing Technology	Inkjet
Display	2 line x 16 characters
Memory Capacity	40MB
Interfaces	Hi-speed USB 2.0 / USB Direct1 / PictBridge™ / Media Cards
Network	Built-in Fast Ethernet 10/100 Base-TX
Network Functionality	Print, Scan, PC Fax and PhotoCapture Centre™
Protocols	TCP / IP (IPv4 & IPv6)
Colour Printing	
Print Speed	Up to 35 ppm (Monochrome) & 28 ppm (Colour)
Print Resolution	Up to 1200 x 6000 dpi
Borderless Printing	Available for A4, LTR, A6, Photo 4x6", Index Card, Photo-2L, Post Card 1
Colour Enhancement	Brother image enhancement allows you to customise colour output
Minimum Droplet Size	1.5pl ² (picolitres)
Colour Faxing	
Modem Speed	33.6Kbps Super G3
Best Transmit Speed	Approximately 3 seconds
Data Compression	MH, MR, MMR (Monochrome), JPEG (Colour)
Fax / Tel Switch	Automatic recognition of fax and telephone reception
One-Touch Dials	6 locations
Speed Dials	100 locations for pre-stored numbers
Group Dials	Up to 6 groups
Automatic Redial	Automatic redial if the recipient fax is busy
Memory Transmission	Up to 400 pages ³
Out-of-Paper Reception	Up to 400 pages ³
Broadcasting Locations	Send the same fax message to up to 156 locations
Auto Reduction	Automatically reduces a received fax to fit onto a single sheet of A4
ECM (Error Correction Mode)	Yes
Fax Forwarding	Yes (Monochrome only)
Fax Retrieval	Yes (Monochrome only)
Dual Access	Scan a fax for transmission while receiving a fax (Monochrome only)
Colour Copying	
Copy Speed	Up to 23 cpm (Monochrome) & 20 cpm (Colour)
Copy Resolution	Up to 1200 x 1200 dpi (Monochrome) Up to 1200 x 1200 dpi (Colour)
Multi-copy	Produces up to 99 copies of each original
Enlargement / Reduction Ratio	25% - 400% in 1% increments
N-in-1	Reduce 2 or 4 pages onto a single sheet
Poster Printing	Enlarge an image to print onto 3 x 3 pages
Colour Scanning	
Colour and Monochrome	Yes
Scanning Resolution	Optical - Up to 1200 x 2400 dpi / Interpolated - Up to 19,200 x 19,200 dpi
Scan Speed	From 4 seconds (Monochrome) & from 5 seconds (Colour) (A4 size, 100 x 100 dpi)
Greyscale	256 shades of grey
Colour Depth	48 / 24-bit colour processing
"Scan" key	Allows the user to scan to E-mail, OCR, image, file, card or a USB flash memory drive, Supporting: JPEG, PDF, TIFF
PC Faxing	
Sending	Yes, available for Windows® and Macintosh®
Receiving	Yes, available for Windows® only
Paper Handling	
Paper Input	150 sheets standard paper tray 50 sheets Automatic Document Feeder (ADF)
Paper Output	50 sheets
Paper Handling Sizes	A4, LTR, LGL, EXE, JISB5, A5, A6, Photo 4x6" (102x152mm), Index Card (127x203mm), Photo-2L (127x178mm), Post Card 1 (100x148mm), Post Card 2 (148x200mm), C5 Envelope, Com-10, DL Envelope, Monarch, JE4 Envelope
Media Type	Plain, inkjet, glossy, transparency
Direct Photo Printing	
PictBridge™	Print directly from a PictBridge™ enabled digital camera
USB Direct Interface	Print directly from a USB flash memory drive
PhotoCapture Centre™	Compact Flash: 4MB - 8GB (Type1 only, Type2 & Microdrive are not compatible)
(Acceptable Media Cards)	Memory Stick™: 16MB - 128MB (Memory Stick Duo™ with Adapter) Memory Stick Pro™: 256MB - 8GB (MagicGate: Yes if not using MG function) Secure Digital: 16MB - 2GB (MiniSD with Adapter) Secure Digital High Capacity (SDHC): 4 - 8GB xD Picture Card: 16MB - 512MB xD Picture Card Type M / Type M+ / Type H: 256MB - 2GB
Media Card Drive	Save and retrieve files using any of the above listed media cards
Network Media Card Drive	Save and retrieve files using any of the above listed media cards through the network
Image Format	Photo Print: JPEG Scan to Card: JPEG, PDF (Colour), TIFF,

Why it pays to have Brother at your side

At Brother, we believe in developing technically advanced equipment that makes a real difference in the everyday activities of our customers. However, we also know that technical excellence alone isn't enough to meet their many and varied needs.

Which is why we also offer an excellent range of support solutions that help our customers achieve the best from our equipment and their valuable time.



The Brother Creative Centre

Created to give you the creative edge in producing fresh, professional sales and promotional materials that can help raise your business profile and awareness, the Brother Creative Centre offers a range of easy-to-use design templates for virtually every business communication.

Creating a positive professional image has never been easier. You simply select, download, customise and print our business templates, and you're on your way to presenting a professional look for your customers and business partners.



Brochures – Give your business messages, products and services a winning, professional image with our new brochure templates.

Mailers – Our easy-to-use software will have your mailers out to your customers, and your customers in to your business, in no time.



Posters – Create professional signs and posters to promote your business or special event in a matter of minutes.

Calendars – Keep your business top of mind by using our customisable calendars to promote your products and services every day of the year.



Simply visit www.brother.com.au to see the wide range of business templates we offer, along with an array of fun, creative, and entertaining activities and projects for your home and family.

Corporate Printing Solutions For Australian Businesses

When choosing a printing solution for your business, you want the assurance of guaranteed excellence and trusted performance.

Our experience in developing innovative technology and products has seen the installation of tens of thousands of Brother machines into individual major corporate and government sites worldwide.

As one of the world's leading manufacturers of high-end printers for the corporate sector, Brother has now provided world class, high quality products and solutions to the Australian business market for over 26 years.

Software Compatibility

With Brother you can use almost any computing platform (Windows, Macintosh, DOS, SAP and Linux) to view and change the printer and network settings at any time, making printer installation and network management easier than ever before.



Quality And Reliability

Brother products undergo rigorous quality assurance testing to ensure they meet the highest customer expectations and Quality Certification Standards, which means we have passed stringent testing criteria governing product safety and design, the work place and ecological and environmental management.

Our Business Is To Help Your Business

Brother has become a market leader in helping small to medium businesses and SOH (Small Office Home Office) users by consistently delivering award-winning products that help improve their business productivity and efficiency.

With Brother at your side you'll find high quality, feature rich office solutions to suit any small to medium business or SOHO need.

Our Innovations Are Driven By Your Needs

We pride ourselves in providing our customers with products and services that help enhance and increase productivity. Our philosophy is simple – to create people-driven technology and products that not only combine high performance and quality features with compact, space saving design, but also fit perfectly into your budget.

Setting New Standards In Quality

Brother has set the benchmark for achieving the highest in industry quality standards, which is assured by our adherence to the exacting ISO 9002 Certification. So when you buy Brother, you're not just putting money into a quality product, you are also making a long-term investment in the future of your business.

Total Office Solutions

Whatever your business size or office equipment requirements, you can rest assured that Brother has a user-friendly and easy to operate product for your every need.



Superior Warranty And Service Support



As with our quality office equipment, our service is second to none. Brother products carrying a standard warranty as well as optional extended and on-site warranties that can be tailored to suit your needs. However, with our nationwide help desk, automatic notification of faults via email and 24/7 online self-help resources, you may find that you never need it.

For further information on the new Professional Series or more on Brother's extensive product range, support and solutions, simply visit our website at www.brother.com.au



Consumables That Won't Consume Your Time And Money

With Brother's innovative new range of Innobella® Inks and Photo Paper, you can easily achieve higher quality print results every time, at much lower cost.

Specifically designed to complement our machine technology, the Innobella® range ensures your Brother Multi-Function Centre® will continually provide superior image quality without requiring time-consuming attention and maintenance or costly continuous replacement.

Providing better print quality, fade resistant colour, greater yields from both ink and paper, protection from machine damage and achievement of overall optimum performance, it's the benefits of Innobella® that really mount up, rather than the costs.

Improving your business image?

It's easy with Innobella®



Innobella® Ink

Specially formulated for ultra-fine dispersion, Innobella® Ink allows your Multi-Function Centre® to operate at its optimal level, ejecting ink droplets just 1.5 picolitres in size at 6000 dpi resolution. This gives you outstanding, high resolution images with smoother gradations on printouts right up to A3 borderless.

Innobella® also gives you much greater cost efficiency, as Brother's high yield Innobella® Ink cartridges offer twice the page yield of standard cartridges.

Additionally, the Innobella® Ink 4-cartridge system offers further cost benefits by allowing you to replace single colour cartridges when they run out, rather than other systems where you need to replace a single 4-colour cartridge which may not be totally empty.

Innobella® Photo Paper

A specially coated, luxurious gloss paper stock designed to accept ultra-fine ink droplets at high resolution, Innobella® Photo Paper allows your images to really shine with exceptionally vivid colours that remain true and long-lasting.

Available in 4 x 6, A4 and A3 sizes, Innobella® Photo Paper ensures your print communications will exude quality and excellence each and every time.



Environmental nightmares won't come from your Brother printer either

Concern for the environment is a main focus in all stages of our products lifecycle. From design, development and manufacturing, through to customer usage and disposal, our products are designed to help you conduct business in the most environmentally sustainable manner possible. Brother Australia conducts environmental activities based on the Brother Group's "5 Rs":

1. REDUCE

waste material by recycling

2. REUSE

products and waste material

3. REFUSE

to buy environmentally unfriendly products

4. REFORM

materials and use again

5. RECYCLE

rather than scrap

This includes:

- **Restriction of Hazardous Substances (RoHS)** – We avoid lead, mercury and other hazardous substances in the manufacture of our products.
- **Energy Star** – Using ENERGY STAR compliant products can make a huge difference in our energy usage. Brother offers a wide range of printers, fax

machines, and Multi-Function Centres® that are ENERGY STAR compliant.

These products are capable of:

- Conserving energy through power management
- Sleep mode
- Running cooler and lasting longer

For current Brother ENERGY STAR Compliant Products, go to www.eu-energystar.org/en/en_database.htm

- **Reduce Consumable and Hardware Wastage** – Our main aim is to keep old hardware and consumables out of the landfill and dispose of e-waste responsibly:
 - We are a major sponsor of "Cartridges 4 Planet Ark"
 - We are also a proud partner of Byteback Australia
- **National Packaging Covenant** – We are a signatory of the National Packaging Covenant with the aim of managing the environmental impacts of our packaging.
- **ISO 14001** – We have been awarded the strict ISO 14001:2004, a series of standards and guidelines, all of which address some aspect of environmental management. Through ISO 14001, we demonstrate our commitment to pollution prevention, environmental regulatory compliance and continual improvement.

Earthwatch – committed to our environment

Brother has joined forces with Earthwatch to help find solutions to some of Australia's pressing environmental challenges.

Earthwatch is an international organisation which supports scientific research and education to promote the understanding and action necessary for a sustainable environment.

Together, Brother and Earthwatch will support a national network of research projects which focus on tackling climate change and the conservation of Earth's precious natural resources.

Brother employees and customers will be actively involved in these projects, volunteering their time to become 'Citizen Scientists', providing hands-on assistance to the researchers in the field.

To find out how you can become a Brother 'Citizen Scientist', go to www.brother-earth.org.au

For full details of what we're doing for the environment, visit www.brother.com.au

NSW/ACT

Bldg A 11 Talavera Rd
Macquarie Park 2113
Ph: (02) 9887 4344
Fax: (02) 9870 7234

VIC

1/733 Whitehorse Rd
Mont Albert 3127
Ph: (03) 9899 4844
Fax: (03) 9899 4833

QLD/NT

245 Riverside Dr,
West End 4101
Ph: (07) 3255 1211
Fax: (07) 3255 1911

SA/TAS

Unit 4, 13 King William Rd
Unley 5061
Ph: (08) 8272 1300 Fax:
(08) 8272 1199

WA

117 Great Eastern Hwy.
Belmont 6104
Ph: (08) 9478 1955
Fax: (08) 9277 2177

For further information on the new Professional Series or more on Brother's extensive product range, support and solutions, simply visit our website at www.brother.com.au

All specifications subject to change without notice.

www.brother.com.au

brother
at your side

Professional Series
MULTI-FUNCTION CENTRE